

# Liberty Pumps™

## **LOWPRO41LP LOW PROFILE SEWAGE SYSTEM**

*Fully  
Assembled  
System!*



*For addition of a toilet without breaking concrete floors. Mounts freestanding or can be built-in using 2" x 6" joists for a more professional looking installation. Additional fixtures such as a shower or sink can be easily added using the optional inlet seal (provided).*



### **FEATURES:**

- 2" solids-handling sewage pump
- 4/10 hp 115V
- Durable poly tank with separate access opening to switch
- Fully assembled unit, including pump, piping and switch. Saves valuable installation time.



(toilet not included)

Patent Pending, U.S. Patent No. 6,430,757

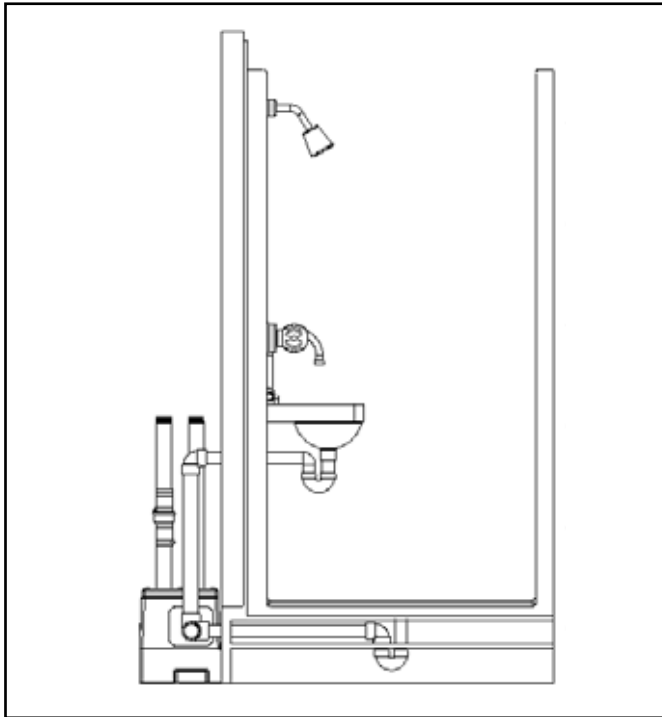
# LOWPRO41LP

## SAMPLE INSTALLATIONS

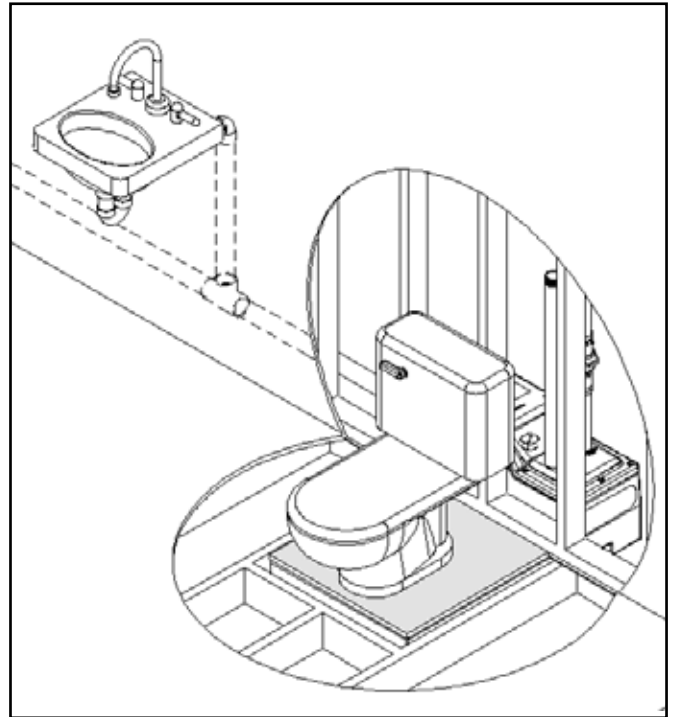
The LowPro41LP can be installed freestanding or built-in, concealing the pump compartment and piping. The platform section of the tank is sized to fit flush with an elevated floor framed with 2" x 6" material.

**Note:** Access to pump compartment is required on built-in installations.

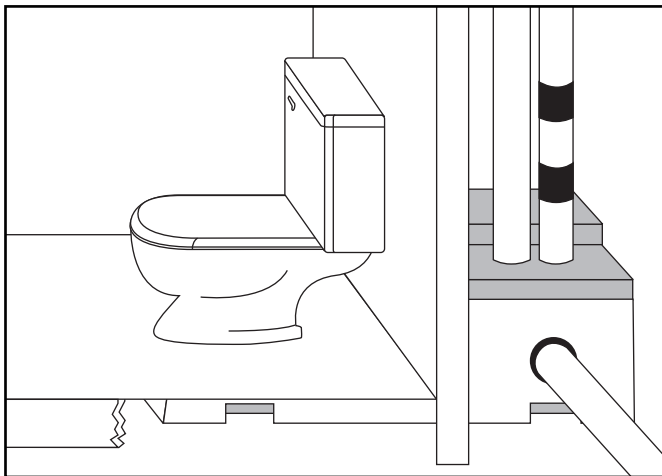
For addition of a lavatory or shower, a rubber pipe seal is included. Seal accepts 2" schedule 40 PVC piping. Showers must be elevated to allow gravity flow to unit.



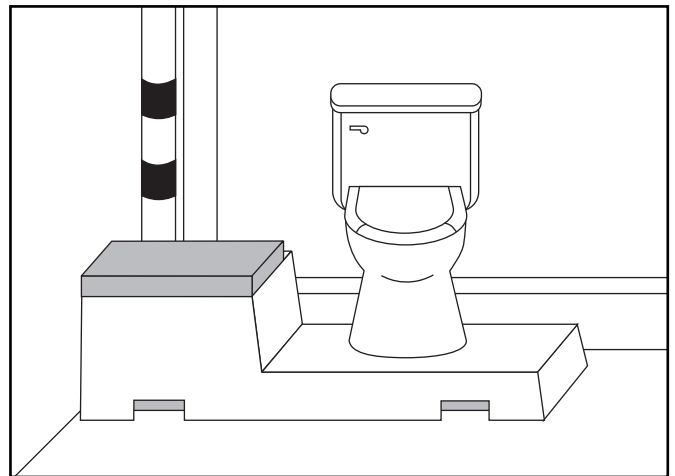
Side view with shower and lavatory.



View with wall and floor framing.

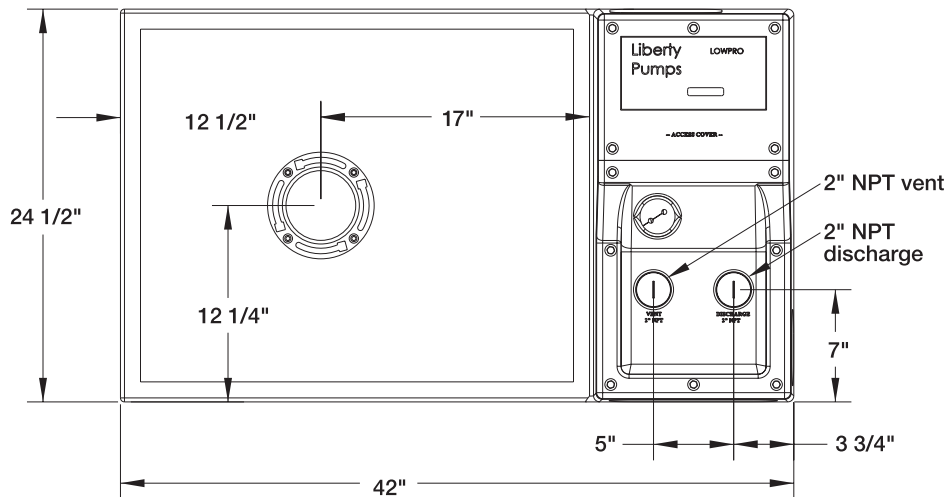


Built-in (hidden)

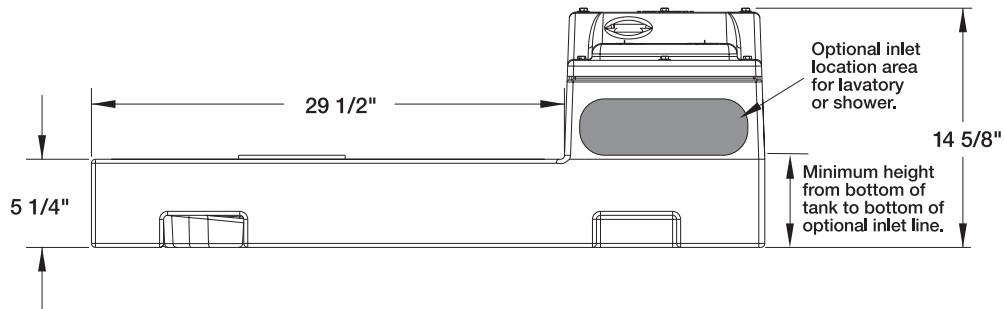


Exposed corner location

**top view**



**side view**



**FULLY ASSEMBLED SYSTEM FEATURES:**

- Durable one-piece poly tank with split cover design – allows access to switch area without disturbing discharge and vent piping.
- 4/10 hp cast iron sewage pump, 2" solids-handling.
- Pre-mounted float switch.
- Schedule 80 PVC discharge pipe (internal).
- 2" check valve.
- Closet flange with extra spacers for optional floor heights. (1/4" and 1/2" provided)
- Pipe grommet seal for additional 2" inlet pipe from a shower or sink.
- Engineered water jet provides a powerful spray within the tank to help break down solids and reduce potential jamming.
- Flow-adjusted pump maximizes pump cycle time and increases pump life.

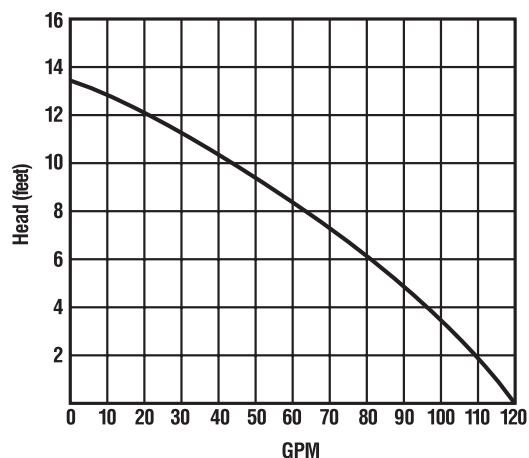
**SPECIFICATIONS:**

4/10 hp 115V 13 amps 60Hz 1550 RPM

**Maximum fluid temperature: 140°F.**

**Assembled weight: 91 lbs.**

**PERFORMANCE CURVE**





Certified

Specifications subject to change without notice.