

Liberty Pumps™

NEW!

Model 404

Residential Drain Pump "Short Profile"

**1/3 hp
3/8" solids-handling**

**Featuring QuickTree™
technology for easy
switch access!**

Features:

- Factory pre-assembled, ready to install
- Fully automatic operation
- Short profile design for compact areas - only 11" tall
- Separate access cover for easy switch inspection (QuickTree™)
 - 1-1/2" inlet
 - 1-1/2" vent
 - 1-1/2" discharge
- Integrally molded rubber gasket for a superior gas-tight seal

Applications Include:

Bar sinks, laundry trays, dehumidifiers, utility sinks and gray wastewater drainage below gravity lines

**Short Profile!
Only 11" Tall**



innovate. evolve.

MODEL 404

AUTOMATIC DRAIN PUMP

FEATURES:

- Compact design for tight areas.
- Factory pre-assembled.
- Fully automatic operation.
- QuickTree™ technology allows quick inspection and removal of float switch without disconnecting the plumbing.
- Integrally molded rubber gaskets for a superior gas-tight seal.
- Oil-filled, hermetically sealed motor with thermal-overload protection; 10 ft., 3 wire power cord with grounded plug.
- Corrosion-resistant polyolefin basin with molded-in connections.
- Maintenance-free, permanently lubricated sealed bearings.
- 3/8" Solids-Handling
- 1-1/2" FPT inlet
- 1-1/2" FPT discharge
- 1-1/2" FPT vent

Maximum fluid temperature 140 degrees F.

Not intended for use with chemicals.

APPLICATIONS:

- Laundry Trays
- Mop Sinks
- Bar Sinks
- Water Softener
- Dehumidifiers
- Wherever gray wastewater drainage is needed below gravity lines.

DIMENSIONAL DATA:

Weight: 13 LBS.

Height: 11-1/8"

Major Width: 13-3/4"

Total Basin Capacity: 4.3 Gallons

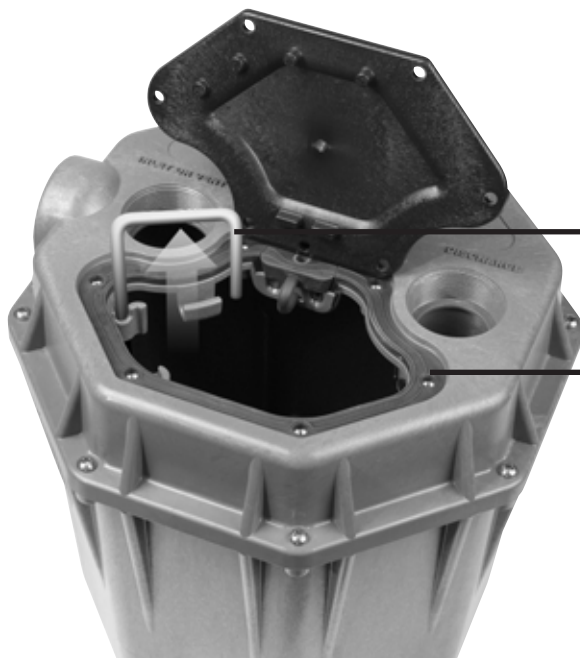
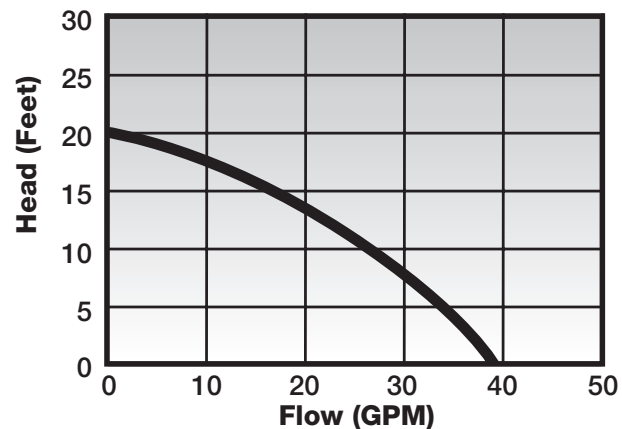
MOTOR SPECIFICATIONS:

1/3 hp. 60Hz

115V 3450 RPM

5a Oil Filled, Thermally Protected

PERFORMANCE CURVE



QuickTree technology allows easy removal of float without disconnecting plumbing or pulling the pump

Heavy-Duty integrally molded rubber gasket provide a superior seal. 10' stack test approved



Specifications are subject to change without notice.

Liberty Pumps • 7000 Apple Tree Avenue • Bergen, New York 14416 • Phone 800-543-2550 Fax (585) 494-1839

www.libertypumps.com

Copyright © Liberty Pumps, Inc. 2006
All rights reserved. LLIT4600-R5/06